



# **APPS JAPAN**

アプリジャパン2015

---

Event Report

# Event Profile

## ◆ Index




- Event Profile (P 2 ~)
- Exhibitor List (P3~)
- Visitor Profile and Statistics(P10)
- Keynote(P12)
- Exhibition & Seminar(P13)

## ◆ Event Outline

<b>Event</b>	APPS Japan 2015
<b>Dates</b>	2015/6/10(Wed.)-2015/6/12(Fri.)
<b>Hall</b>	Makuhari Messe (Chiba Japan)
<b>Organizer</b>	APPS Japan Steering Committee
<b>Management</b>	NANO OPT Media, Inc.
<b>Supported by</b>	NPO wearable computer research and development mechanism, Japan wearable device user meeting, World Wide Web Consortium(W3C)
<b>Co-located events</b>	Interop Tokyo 2015 / Connected Media Tokyo 2015/ Digital Signage Japan 2015/Location Business Japan 2015/

## ◆ The Number of Visitors

**136,341** \*including co-located event

Dates	June.10 <sup>th</sup> (Wed)	June.11 <sup>th</sup> (Thu)	June.12 <sup>th</sup> (Fri)
Weather			
# of Visitors ( )2014	38,718 (36,613)	45,322 (44,478)	52,301 (51,518)
<b>Total</b>	<b>136,341(132,609)</b>		

## ◆ Number of Exhibitors

**486** \*including co-located event

# of Exhibitors ( ) 2014	486 (526)
-----------------------------	--------------

# of booth spaces ( ) 2014	1345 (1320)
-------------------------------	----------------

## APPS Japan 2015

A	M
Exhibitors Name	MEDIAEDGE Corporation
Advanced Research & Information Service Inc.	Mobilous KK.
ATGS Co.,Ltd.	Mozilla Japan.
AXSEED/Lecre	N
Akademia Systems Corp.	NC Design&Consulting.co.,Ltd
Appiaries Corporation	NEWSON CO.,LTD
Ambloom Inc.	NIFTY Corporation
B	NatsumeAtari Inc.
BeMoOve Co.Ltd.	Newphoria Corporation Inc.
BITS Co., Ltd.	Nihon CLOUDFILING Corp.
BizMobile Inc.	P
D	People Software Corporation
DMM.com	PICO HOUSE Co.,LTD.
DreamNet's, Inc.	Penetrate of Limits Co.,Ltd.
DreamOnline, Inc.	Pikul Inc.
E	Q
ESPACE TECHNOLOGY Inc.	QOLP Inc.
ECO SOLUTIONS	R
Equine Studio Co.,Ltd.	Rakuten, Inc.
F	Rely Inc.
FULLER.inc	Repro Inc.
Fenrir Inc.	Romotive, inc.
FromNow Co., Ltd.	S
G	SI Agency Inc.
GMO Internet,Inc.	Sansan,Inc
GMO TECH, Inc.	Sekai Lab Pte.Ltd.
GlassCube,Inc.	Septeni America, Inc.
BLOBAL GRAPHICS	Specified Nonprofit Corporation Research and Development Organization For Wearable Computer
Glueck Co. Ltd.	Spiritex inc.
Google Inc.	Superhuman Sports Society
GrapeCity Inc.	T
H	Techfirm Inc
Hokkaido Chizu Co., Ltd.	Torques Inc
I	Triax
Image Infomation Inc.	U
itup	USERUS.Inc
i3DESIGN Co., Ltd.	V
icotoba Inc.	VASARA Co.,Ltd.
J	VIZINER LIMITED
Japan Android Group	Vuzix Corporation
Japan System Techniques Co., Ltd.	W
Jorte.Inc	Watanuki kikaku, Ltd.
K	Wearable Device User Group Japan
KANAME Co.,Ltd.	Wide Area Network Fifty-five inc.
KCC Corporation	World Wide Web Consortium (W3C)
L	webrage CO.,LTD
LisB,corp	woodsmall inc.
LiviGen Inc.	X
	XLsoft K.K.
	Y
	Yaraku, Inc.
	Yotsuba Production Inc.
	Z
	ZYYX Inc.
	O
	8crops

## Interop Tokyo 2015

### A

A10 Networks Inc.  
 AIM ELECTRONICS CO.,LTD.  
 ALAXALA Networks Corporation  
 Anritsu Networks Co.,Ltd.  
 ARA Networks Co., Ltd.  
 ATEN JAPAN CO.,LTD.  
 Absolute Software Corporation.  
 Accelia,Inc.  
 Fullflex / Accense Technology, Inc.  
 Accenture Japan Ltd  
 Aeroflex Japan KK  
 Agrifuture  
 Akamai Technologies GK  
 Allied Telesis K.K.  
 Mellanox Technologies Japan K.K. / ALTIMA Corp.  
 Anuta Networks  
 Aplix Corporation  
 Arista Networks Japan Limited.  
 Array Networks K.K  
 Artiza Networks, Inc.  
 Aruba Networks K.K.

### B

BCN Inc.  
 BRYCEN Co.,Ltd.  
 Bit-isle inc.  
 Bitrieve. INC.  
 Bplats,Inc.  
 Braveridge Co., Ltd  
 BroadBand Tower, Inc. / EverySenseJapan Inc  
 Brocade Communications Systems Inc

### C

CASO,INC.  
 CIO Plus Inc.  
 CloudianKK  
 COMSQUARE Co.,Ltd.  
 CTCSP Corporation  
 Canon System & Support Inc.  
 Canonical  
 Capy Inc.  
 CenterPEER Corporation  
 Check Point Software Technologies Ltd.  
 Cisco Systems G.K.  
 Citrix Systems Japan K.K.  
 Clearswift K.K.  
 ComWorth Co.,Ltd.  
 Computer Education System Inc.  
 ConnectFree K.K.  
 Connection Technology Systems Japan Ltd.  
 Contela, Inc.  
 Core Computance Co.,Ltd  
 Cyan Inc.  
 Connect Free K.K.

## Interop Tokyo 2015

D	I
D-Link Japan K.K.	IID, Inc.
DATA-TREK,Inc	INDETAIL Co., Ltd.
DENSO CO., LTD.	IP Infusion Inc.
DEVGURU Co., Ltd.	IPCORE-Lab.Inc
DYDEN CORPORATION.	IT Solution Services Co., Ltd.
Daiwa Technical co.,Ltd.	ITOCHU Techno-Solutions Corporation
Data Controls Inc.	Intellect Systems Co., Ltd
Dell Japan Inc.	Internetworking & Broadband Consulting Co.,Ltd.
Digital Trans Communications Inc.	Ixia Communications K.K.
dit CO.,LTD	iBSolution Corporation
	Ikeriri Network Service Limited
E	J
EMC Japan K.K.	JENNIFER SOFT
EXEED Co., LTD.	Japan Advanced Institute of Science and Technology (JAIST)
Enowa Co Ltd.,	Japan Media Systems Corporation
EverySenseJapan Inc/BroadBand Tower, Inc.	Japan Registry Service Co., Ltd.
Extreme Networks K.K.	Johokobo, Inc.
Extrus. Inc	Juniper Networks K.K.
Eyes, JAPAN Co. Ltd.	Jupiter Technology Corp
eGlobal Systems Co., Ltd	
F	K
FALINUX Co., Ltd.	Kanagawa Institute of Technology
FFRI, Inc.	KDDI R&D Laboratories, Inc.
FIT Pacific, Inc.	Keukey Inc.
FKII(The Federation of Korean Information Industries)	
FUJIFILM Corporation	L
FUJITSU ADVANCED ENGINEERING LIMITED	LSware Inc
FUJITSU GROUP	LeanXcale
FUJITSU KYUSHU NETWORK TECHNOLOGIES LIMITED	Lenovo Japan Ltd.
FUJITSU LIMITED	Logic Vein, Inc.
FURUNO SYSTEMS,Co.,Ltd.	
FXC Inc.	M
Fiber 26 Network Inc.	M.SOFT, Co.,Ltd.
Flextronics International Japan Co.,Ltd	MARUBUN CORPORATION
Fluke Networks	MEDIA PLUS Co.,Ltd.
Fookell Co., Ltd.	MEIKYO ELECTRIC CO.,LTD / GEIST
Fortinet Japan k.k.	MITSUI KNOWLEDGE INDUSTRY CO., LTD.
FURUKAWA ELECTRIC CO., LTD. / FURUKAWA NETWORK SOLUTION CORP.	Macnica Networks Corp
	Macnica Networks Corp. / Nutanix Japan
	Macnica Networks Corp./Splunk Inc
	Mahoroba Kobo, Inc.
	Main Technology K.K.
	MapR Technologies, Inc.
	McAfee Co., Ltd.
	Meru Networks K.K.
	Midokura
	The University of Tokyo
	Mitsui Electronics Inc.
	Macnica Networks Corp.
	mynavinews
G	
GET-IT Co.,LTD	
Glean Corporation	
GLOCALSM Inc.	
Green University of Tokyo Project	
H	
Harada Corporation	
Huawei Technologies Japan K.K.	
Hewlett-Packard Japan,Ltd.	
Hitachi Metals, Ltd.	
Hitachi Systems, Ltd.	

**Interop Tokyo 2015**

**N**

NARA Institute of Science and Technology  
 NIPPON DYNAMIC SYSTEMS Co., Ltd.  
 NEC Capital Solutions Limited  
 NEC Corporation  
 NETREQS Co., Ltd.  
 NISCOM Inc.  
 NISSHO ELECTRONICS CORPORATION  
 NKIA  
 NOX Co.,Ltd.  
 NTT Advanced Technology Corporation  
 NTT Advanced Technology Corporation  
 NTT Communications Corporation  
 NTT IT CORPORATION  
 Napatech Japan K.K.  
 National Institute of Information and Communications Technology  
 Net One Partners Co.,Ltd.  
 Net One Systems Co., Ltd.  
 Net One Systems Co., Ltd./Juniper Networks K.K.  
 Net One Systems Co., Ltd. / Big Switch Networks, Inc.  
 NSFOCUS JAPAN, Inc./Network Value Components Ltd.  
 Network Value Components Ltd.  
 Networkworld Corporation  
 New Energy and Industrial Technology Development Organization(NEDO)  
 Next Generation Network Service Platform Consortium  
 Nippon System Kaihatsu Co.,Ltd.  
 Alcatel - Lucent Japan  
 Nuage Networks

**O**

O'Reilly Japan,Inc.  
 O3 Project  
 OSAKA GAS INFORMATION SYSTEM RESEARCH INSTITUTE CO.,LTD.  
 ORIZON Systems Co.,Ltd.  
 OTSUKA CORPORATION  
 Okinawa Open Laboratory

**P**

Pacific Net Co.,Ltd  
 Palo Alto Networks, Inc.  
 Panduit Corp.  
 Passlogy Co.,Ltd.  
 Passlogy Co.,Ltd  
 Plat'Home Co., Ltd.  
 Pluribus Networks, Inc. / NISSHO ELECTRONICS CORPORATION

**Q**

QLogic Limited  
 QNAP Systems,Inc.  
 QualitySoft Corporation  
 QCT(Quanta Cloud Technology)

**R**

Rakudou,Inc.  
 Raritan Japan Inc.  
 Riverbed Technology Japan K.K.  
 Rockwell Automation Inc.  
 Rockwell Automation Inc.

**S**

SANTEC CORPORATION  
 SCSK Corporation  
 SHARP CORP.  
 SQC Inc./Qualisystems  
 SUNCORPORATION, Inc.  
 Sassor inc.  
 Scality Japan / BroadBand Tower  
 Schneider Electric Japan Holdings Ltd  
 Science-Arts, Inc.  
 Seiko Solutions Inc.  
 Seoul Information System Co., Ltd  
 Sky Co., LTD.  
 So-net Business Associates Corporation  
 Software Defined Media Consortium  
 Soliton Systems K.K.  
 Soltec Japan, Ltd.  
 Symantec Japan, Inc.

**T**

TECHMATRIX CORPORATION  
 TIS Inc.  
 Toyo Corp.  
 Toyo Corp. / Spirent Communications  
 A.I.Corporation / Tail-f Systems  
 TalariaX Pte Ltd  
 Quantum ICT Research Institute, Tamagawa University  
 TileFlow Japan, Inc.  
 Tokyo Electron Device Limited.  
 Trend Micro Inc.  
 Tripwire Japan K.K

**U**

UNIADDEX Co.,Ltd.

**V**

VMware K.K.  
 ViaScope Inc.

**W**

Wave Electronics Co.,Ltd  
 Web Service Development  
 WELLSYSTEM Corporation  
 Keio University  
 WinMagic Japan K.K  
 Wizzcore

## Interop Tokyo 2015

<b>X</b>
X-TRANS
<b>Y</b>
Yamaha Corporation/SCSK Corporation
<b>Z</b>
ZOHO Japan Corporation
ZTE Japan. K.K.
Zabbix Japan

## Connected Media Tokyo 2015

<b>A</b>
ADTECHNO Inc.,
Artesyn Embedded Technologies
<b>C</b>
Cosmo Sound
Cybernetech Corporation
<b>D</b>
DynaComware Corporation
<b>F</b>
FUJI TELEVISION NETWORK,INC.
<b>I</b>
IT Access Corporation
Intel K.K.
<b>J</b>
JAPAN BROADCASTING CORPORATION
<b>K</b>
KDDI CORPORATION
<b>L</b>
Lancerlink Co.,Ltd
Limelight Networks,Inc
<b>M</b>
Marklogic
multiscreentv
MUSASHI SI CO.,LTD.
<b>N</b>
NEXTEP SOLUTIONS,INC.
Nippon Television Network Corporation
<b>P</b>
Plat-Ease Corporation
<b>R</b>
radiko co., Ltd.
<b>T</b>
TOKYO BROADCASTING SYSTEM TELEVISION,INC.
tv asahi corporation
<b>U</b>
UNIXON SYSTEMS CO.,LTD.
<b>Y</b>
YOSHIDUMI Information Inc

**Digital Signage Japan 2015**

<b>A</b>	<b>L</b>
ACUBE Corporation.	Lacima Corporation
ASTRODESIGN, Inc.	LINDY Sales Inc.
CHIEF	<b>M</b>
<b>C</b>	MEDIAEDGE Corporation
comnet	Mitsubishi Electric Corporation
<b>D</b>	Micro display
DISE JAPAN Inc.	MicroAd Digital Signage, Inc.
DT Research,Inc	MITOMO CO.,LTD.
Digital Signage Consortium	MAKKONET INC.
<b>E</b>	<b>N</b>
ELIVISION	N.GeN Corporation
e-vision Co., Ltd.	NIPPON DYNAMIC SYSTEMS Co., Ltd.
<b>F</b>	NEXWAY Co.,ltd.
FunFactoryCo.,Ltd.	NHK Enterprises, Inc.
<b>G</b>	NTT Group
Good Planning Co., Ltd.	NTT IT CORPORATION
Groovy Technology Corp.	Newphoria Corporation Inc.
<b>H</b>	<b>O</b>
Hayami Industry Co.,Ltd	ONLY STYLE Inc.
Hibino Intersound Corporation	Oar corp.
<b>I</b>	Office Colors
IMAGENICS Co.Ltd	<b>P</b>
<b>J</b>	PD System Co., Ltd.
JUICE DESIGN Co.,Ltd.	PDC Co., Ltd.
Japan Broadcasting Corporation	<b>R</b>
Japan Material CO.,LTD.	RATOC Systems,Inc.
JP CREATE . INC.	RS Co.,Ltd.
<b>K</b>	<b>S</b>
KOBUNDO CO.,LTD	SDS Corporation
Konica Minolta, Inc.	SHENZHEN PULUN ELECTRONICS CO.,LTD
KYOEI SHOJI CO., LTD.	SKNET Corporation Ltd.
Kordz Japan	sofnetjapan Co.,Ltd.
	San Technology, Inc.
	Socionext Inc.
	Sony Visual Products Inc / Sony Marketing (Japan) Inc
	Sunrise Inc.
	<b>T</b>
	TOSHINAER JAPAN CO., LTD
	TeraState Inc. / JUNS, Inc.
	Tokyo University of Technology
	Touch Panel Systems K.K.
	TSUZUKI TECHNO SERICE,LTD.
	<b>U</b>
	UNITCOM.inc
	<b>W</b>
	Will Smart Co., Ltd.
	<b>Y</b>
	Yasukawa Information Kyushu Co.,Ltd.



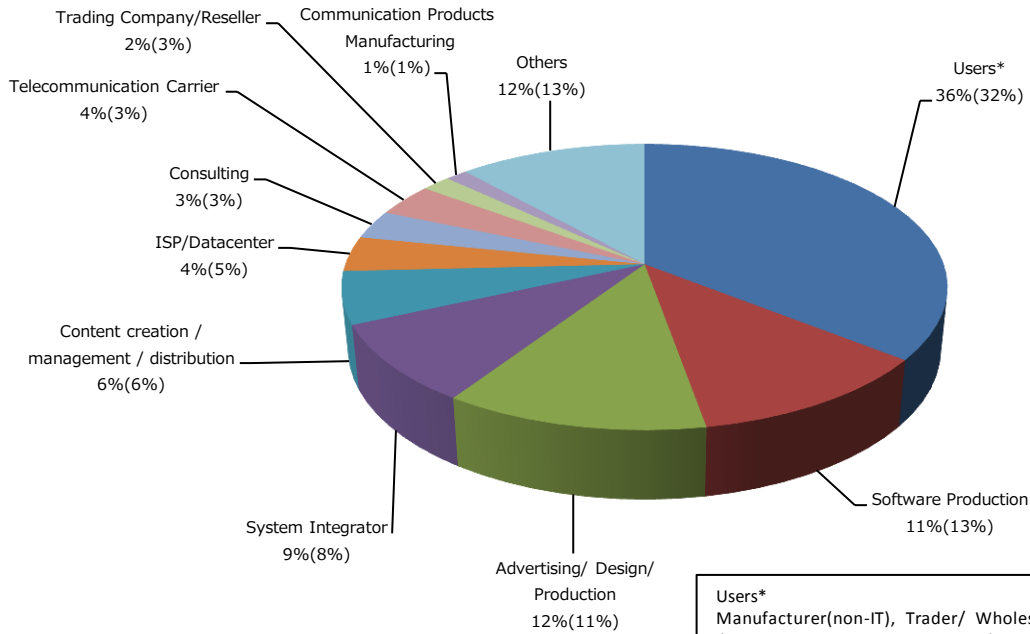
**Location Business Japan 2015**

A
ACCESS Co., Ltd.
APPLIED TECHNOLOGY CO.,LTD
ACMOS INC.
C
CALIL Inc.
D
DYNATECH INC.
E
ESRI Japan Corporation
G
GISupply,Inc
GNSS Technologies Inc.
GOGA,Inc.
Georepublic Japan
H
Hitachi Advanced Systems Corporation
Hitachi Industrial Equipment Systems Co.,Ltd.
Hitachi, Ltd.
Hokkaido Chizu Co., Ltd.
I
INTEC Inc.
Informatix Inc.

K
Koozyt, Inc.
M
MegaChips Corporation
N
National Institute of Advanced Industrial Science and Technology
Q
NEC Corporation
S
Site Sensing Inc
Sugihara Software & Electron Industry Corporation
T
The Location Inc.
U
Ubisense Inc.

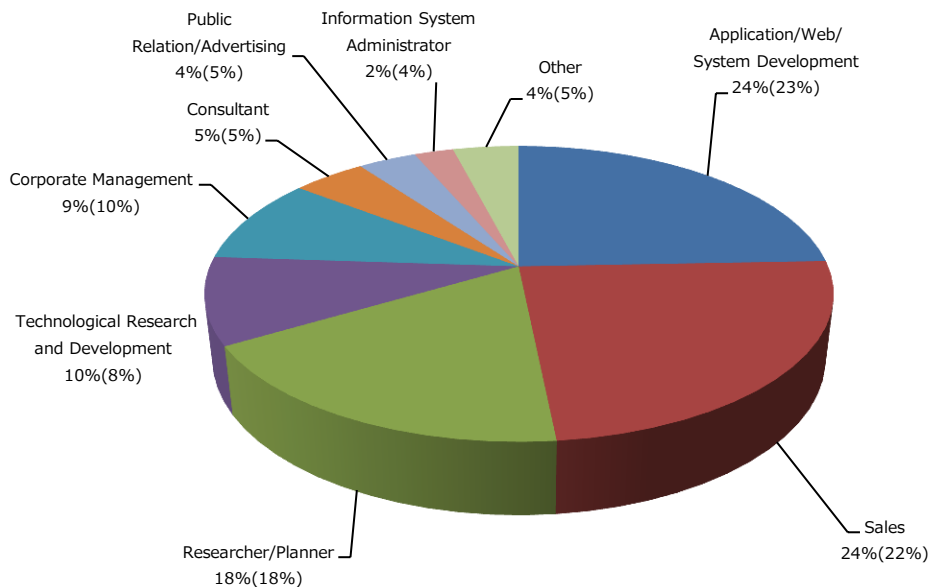
\* Percentage in ( ) is the record of 2014.

## Type of Business



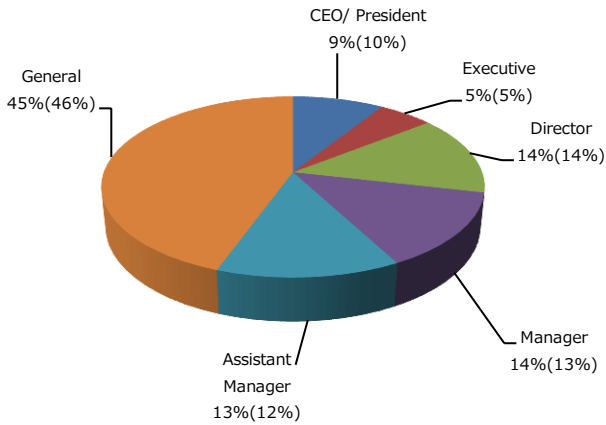
**Users\***  
 Manufacturer(non-IT), Trader/ Wholesale/ Retailer(non-IT), School /Education Institute, Constructor/ Real Estate, Hospitality Industry, Government/ Association/ Organization, Finance/ Security/ Insurance, Hospital/ Medical Institution, Transportation/ Distribution

## Job Category

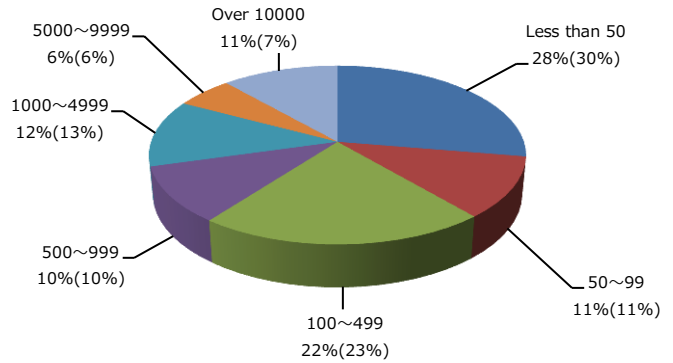


\* Percentage in ( ) is the record of 2014.

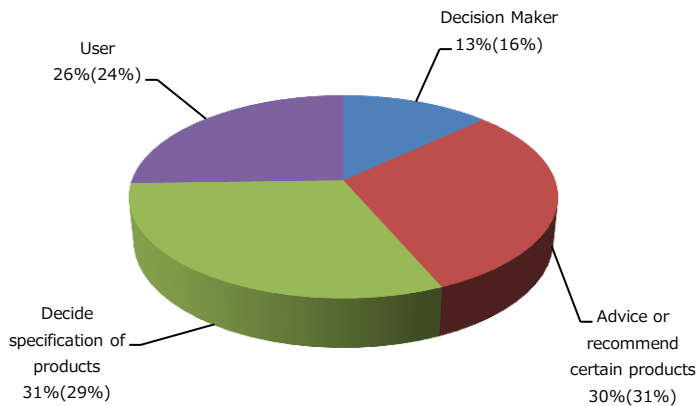
**Job Title**



**Number of Employee**



**Purchase Role**

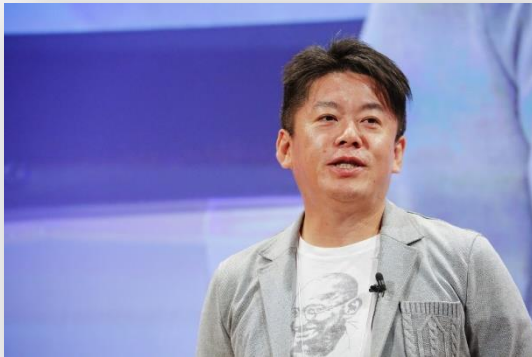


**KA-03**

6/10 Wed 12:20-13:00

## Will the world change in IoT ?

Takafumi Horie  
SNS Inc.  
Founder



**KB-08**

6/11 Thu 10:30-11:10

## Trend of IoT , the point of view of the APPS and communication

Takuma Iwasa  
Cerevo Inc.  
President, CEO

